

Connecting Thamesmead Evaluation Insights



**CONNECTING
THAMESMEAD**

Connecting communities for
better health and wellbeing

Snapshot 2

November 2025

dg:cities



Connecting Thamesmead Evaluation

dg:cities

Connecting Thamesmead aims to improve social connection, mental health and wellbeing, for residents in the wards of Thamesmead Moorings, West Thamesmead and Thamesmead East.

As part of the evaluation DG Cities has been speaking to groups across Thamesmead to understand the impacts of the programme.



Thamesmead Community Fund Panel 2024:
<https://www.thamesmeadnow.org.uk/media>

Connecting Thamesmead

Local assets
(e.g. Moorings
Social Club)

Resident
Community
Connectors to
enable connection

Thamesmead
Community
Fund funded
projects

Coordination
between Peabody,
Royal Greenwich
and London
Borough of Bexley

Supported or
promoted
community groups

Royal Greenwich and
London Borough of Bexley
service offers

Our evaluation engagement:

dg:cities

1:1 interviews
with 10 people

Focus groups
with 13 people

Developing case
studies with 5
local projects

How we
engaged

Discussions with
25 people at
group events

This builds on
our first
engagement
period – with
130 people

Short in-person
and online
questionnaires
with 20 people



What we
found...

The Thamesmead Community Fund (TMCF)

The fund has a range of beneficiaries:

- Gender specific offerings
- Global majority led
- Children and young people
- Families
- Older people

Walking clubs

Creative and craft skills

Food and cooking sessions

Dancing sessions
Music and podcast
Choir

Sports and physical activity

Art therapy
Art events

Diverse projects and activities funded

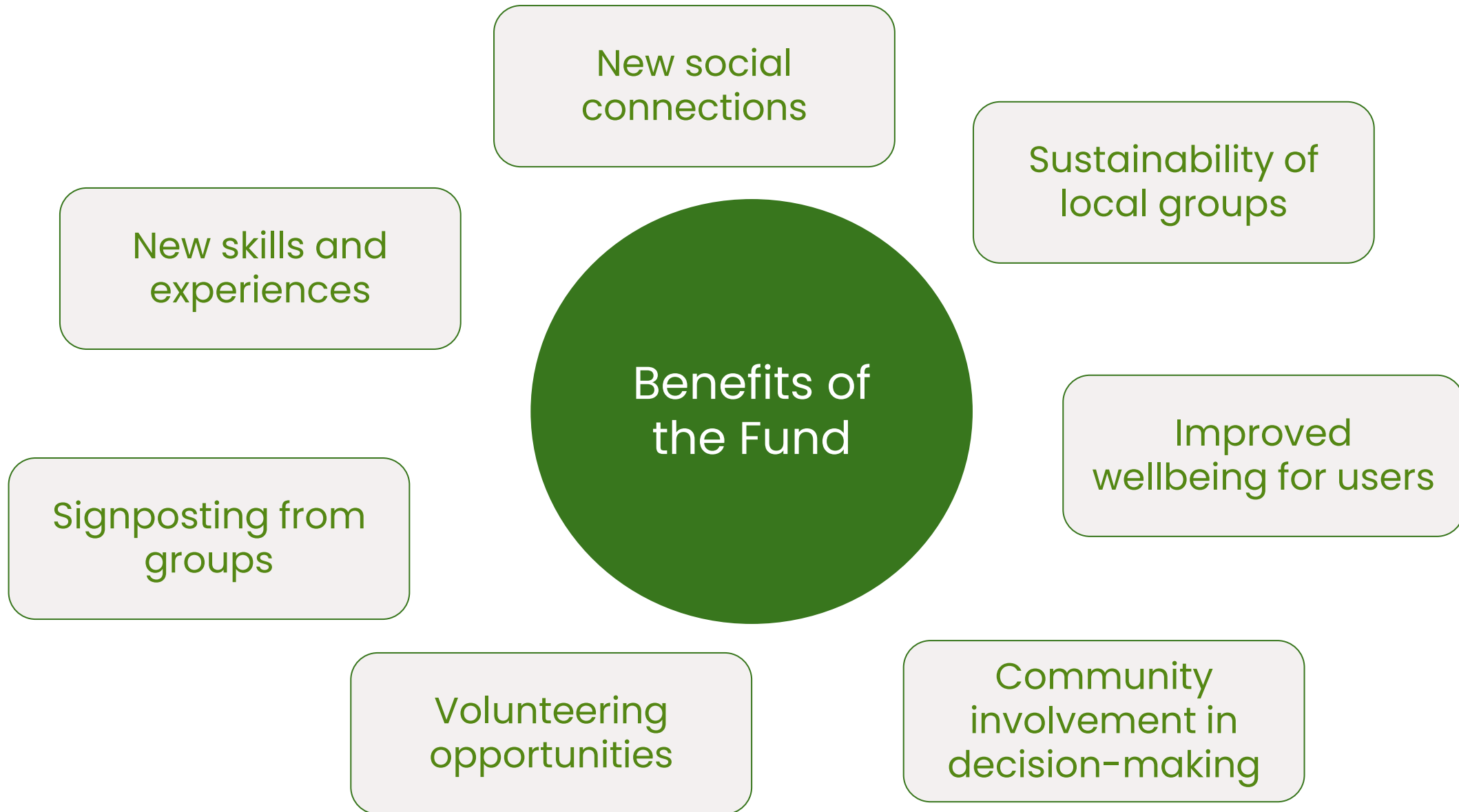
SEND focus

Summer and after-school clubs

Coaching and skills development

Mental health focus

The Thamesmead Community Fund (TMCF)



The Thamesmead Community Fund (TMCF)

Coordinate marketing of new projects

Share tips between groups

Support for groups post-funding

Groups to collaborate

<< Opportunities
Challenges >>

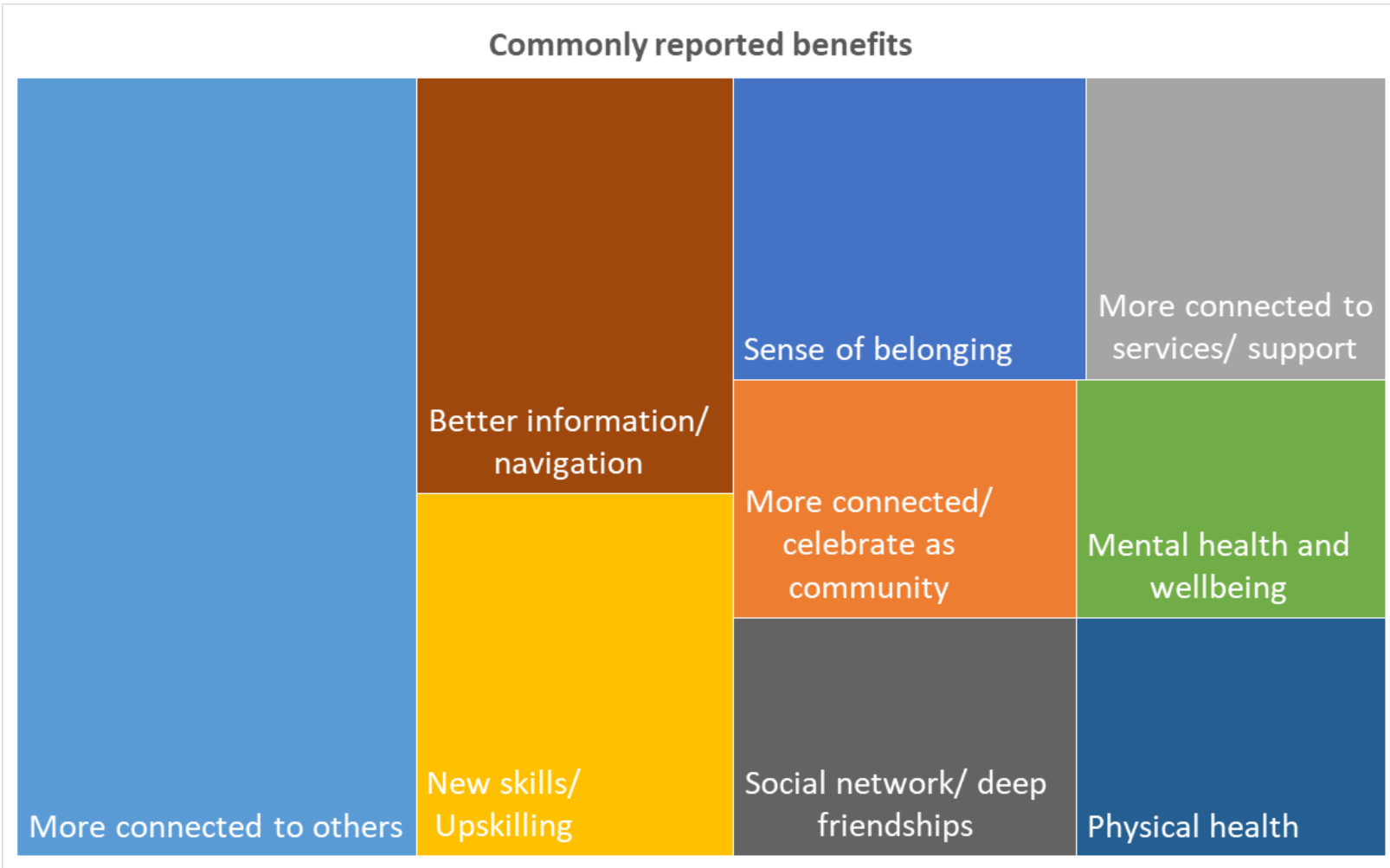
Ongoing sustainability

Reaching different residents

The capacity of leaders

Benefits of attending local groups and activities -

Commonly reported benefits



“Social connections make a big difference to my life. I have some local connections who make the local area welcoming as I am getting to know the area.”

“It also plays a very key role in providing local information and where you can share ideas and opportunities.”

Local groups have helped people to connect, with great examples >

dg:cities

Helping members to create and make

Providing 'story-telling' skills

Using group WhatsApp to keep in touch

Offering child-care or child activities at the same time

Collaborating with local hubs and services



Local groups have helped people to connect, with great examples >

dg:cities

Being adaptable

"You need to be able to adjust and adapt for group and meet your objectives." (Group leader)

Enabling members to make decisions e.g. days to meet

"We are member led and that comes across in their relationships and how they now interact with each other. The activity is almost secondary to facilitate a welcoming space that feels communal and respectful and open." (Group leader)

Introducing health experts into sessions to share

"In the room, what really makes me happy is to see joy on their faces, and when they are listening to Drs talking about conditions and people are taking it in." (Group leader)



Recommendations

Progress on earlier recommendations



Some project visits are taking place to capture insights and learnings.



New outreach approaches are being designed to provide information to residents.



Review and update the aim of the Connectors – new connectors have been recruited.



Funded activities now receive **consistent information packs** to provide clear signposting to their users.

Current recommendations

Joined-up and coordinated communication to announce and promote the TCMF projects

Consider where there can be **more co-design** with community members or the Connectors.

Ensure GPs, shops and other services can share information so all the community can be reached.

Support the sharing of **volunteering opportunities** with the community.

Link social prescribing to the local activities and groups in Thamesmead to communicate about local offers.

Support groups to **collaborate** with each other, where there are opportunities.

Support the sustainability of funded projects beyond their funding round.



Thank you



Our evaluation wouldn't be possible without the valuable time and input from all those who participated. Thank you to everyone for your thoughtful engagement this round, including:

- Thamesmead Connectors
- The Makers Nook
- The Art of Self-Expression
- The Post-Stroke Support Group
- The Cleanse project
- Thamesmead Learning Circle
- Thamesmead Badminton Club
- Men Matters
- Culture Forum
- The Youth Hub
- Young ambassadors, Parent Power
- The Nest
- Waterways Family Hub and its parents
- The Carers Network
- Oxleas NHS Foundation Trust
- All who completed our surveys!
- And many more!

Take part in our final round



**CONNECTING
THAMESMEAD**

Connecting communities for
better health and wellbeing

We are continuing to explore the impact of Connecting Thamesmead and will share more findings and recommendations in the new year!

To find out more and take part in our current conversations and engagement visit:

www.thamesmeadnow.org.uk/connecting-thamesmead

Or contact: Leanne.Kelly@dgcities.com

dg:cities

Any comments or questions??

Get in touch!

leanne.kelly@dgcities.com

ed.houghton@dgcities.com