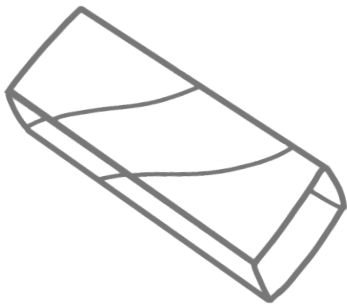
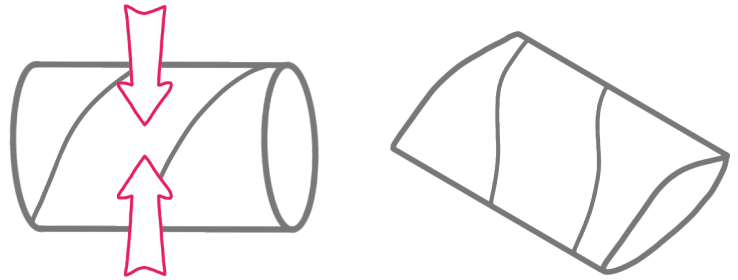


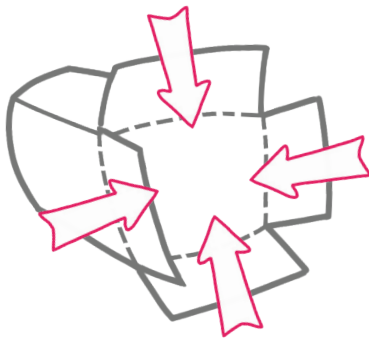
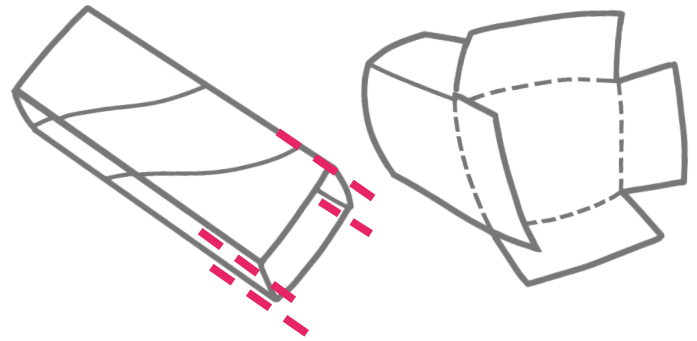
MAKING POTS FROM HOUSEHOLD WASTE: TOILET ROLLS

- 1** Squash your toilet roll flat to make a crease



- 2** Turn the flattened roll 90 degrees and then squash it flat again to make two more creases. Your toilet roll should now almost be square shaped

- 3** Make four 2cm cuts along the creases at one end of the roll to create four flaps



- 4** Fold the four flaps you have created inwards in a clockwise direction, as if folding a box

- 5** This end is the base of your pot, turn the roll over and set it down. The creases in the tube should help to keep the pot flat

- 6** Place your pot on a tray or saucer to collect excess water

